



GWRRA Region H
The South Central Region



FABULOUS FIFTIES

Your Region H Convention –

Convention Center,

Marshall, Texas - March 29 – 30 - 31-2012

Back Home in Marshall. It's always good to be Home. Join your region team in Marshall for a FUN Educational, and Entertaining time. No big city traffic!

Continues on page 2

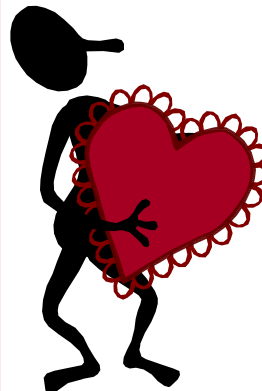
INSIDE THIS ISSUE:

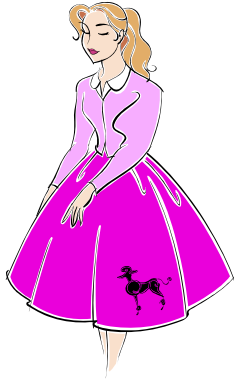
Arkansas District Convention	24
Assistant Director Comments	10
Calendar	30
Chapter of the Year	11
Couple of the Year	9
Director's Corner	3
GWRRA	4,5, 6
Leadership	12
Training	
Medic First Aid	15
Membership Enhancement	7
Missouri District Convention	26
Motorist Awareness	14
Oklahoma Convention	28
Region H Convention	18
Region H Team	29
Rider Education	16

'Round the Region this month

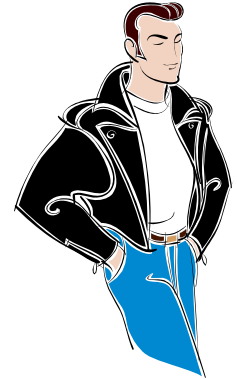
OCP (Officer Certification Program)

February 4–5, 2012
Georgetown, Texas
Contact Lynn Heene no later than January 20th.
lynnheene@yahoo.com





FABULOUS FIFTIES



We will start with **Opening Ceremonies** with a **Mini-Grand Prize drawing for \$250**. Hot dogs & root beer floats will be served in the lobby immediately after opening. A **Bus Trip to Shreveport** (Signup on Web) is also offered on Thursday evening. Marshall CVB has arranged a comp package at one of the casino's. *It is mandatory to provide Drivers License and DOB for the COMP!

The **Pine Car Derby Races** are back. We will have traditional and open class races. Rules will be posted on the region web site. Join the FUN, get that Pinecar racer out from the back of the closet, or create a new racer. Competition is fierce!

Saturday brings a wonderful opportunity to tour the **Motor Trike factory** (Advance Signup Required). A guided ride to the factory in Troop TX, and lunch. It's a fun educational time while touring a working trike facility.

Friday brings **Crafts for the Ladies** and Saturday offers a **Ladies Bus Trip** to Marshall Shopping.

Friday & Saturday will feature a **Bike Wash** by Local Boys/Girls Club. Let the kids get your ride sparkling clean after your long ride to Marshall. All the young folks washing are trained by region members on what to avoid on your bike, no worry. GWRRA volunteer members on site at all times.

Friday evening will feature a downtown **Poker Walk** and **Sock Hop/Street dance**. Marshall has a new facility in the town square so come on out and shake a leg. The Light show will occur at the same location. Downtown Marshall has several local dining opportunities, get away from the chains for an evening of great dining. You will enjoy a great evening in downtown Marshall.

Please be sure to attend the **2012 Region COY Selection** on Friday. Your District Couple of the Year needs your support. Bring a crowd, noise makers, enthusiasm, cheer for your COY.

The always popular and competitive **Dress Competition**, Couple, Chapter will be held on early Saturday afternoon. Participation, participation, participation equal FUN for you and your chapter.

Saturday brings the ever popular and competitive **Bike Show**. A crowd pleaser each and every time.

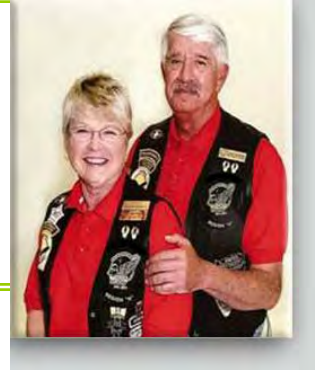
Your **Rider Education team** is presenting a Trike Course, On Bike Road Captains Course, CPR – First Aid (re-certification), Trailing Course, Crash Scene Response, Amazing Team Challenge and numerous educational and entertaining seminars.

Join the spring kickoff Convention for Region H

Fabulous Fifties FUN in Marshall

Director's Corner

Harry and Joan Dollarhide Region H Directors



February, the Love month. My thought immediately go to Valentine's Day. What do I get my loved one on this romantic day. Where do we go for dinner. Where will I find that perfect card that speaks to my valentine. How to make this day memorably and stand out from past Valentines. Guy's this is your notice to start planning now. Do not wait to the last minute, they will know, somehow they will know. Big chance to make points, bigger chance to lose major points.

The 2011 financial business is behind us and the region and district business meeting are concluded for another year. Joan & I attended the Kansas Mid-Winter Rendezvous again this year. The Mid-Winter event was Friday & Saturday with the business meeting on Sunday. Great time was had. Kansas has a tradition of taking couples picture with a cutout snowman. They then place your picture at the dining table for the Saturday night dinner. Great mixer idea and you get to keep the picture. Every year we meet someone we have never had a chance to visit with before. And of course renew old acquaintances. The Kansas Team put on a great event, relaxing and FUN.

Next big event is the Region H Convention in March. As you probably know we are back

home in Marshall TX. Your region team has many FUN events, seminars, and classes planned to fill all your fun & educational needs. Vendor registration is proceeding at a good pace, so I anticipate plenty of vendors for your shopping pleasure. We are in the final planning stages for a Shreveport Casino trip, opening night Dogs & Floats, an Art Party (class), Downtown Poker Walk, Bike Wash by the local Boys Club, plus many other events for your enjoyment. Don't forget the escorted ride to Troop TX for the Motor Trike factory tour.

In this 35th year of GWRRA the Home Office is soliciting articles for Wing World with the following themes; (Not limited to these, just suggestions). Forward your articles to M a n n y M o - r e n o (mmoreno@gwrro.org), Manny is at the Home Office.

For CHAPTERS:

- How old is your chapter?
- What has been your fondest memory of GWRRA?
- How have you been able to maintain your Chapter all these years?
- Do you have any advice (or ideas) for other Chapters?
- What is your fondest memories of your Chapter

and/or GWRRA?

PEOPLE:

- I need 1-2 paragraphs about you? (Professional & personal)
- How did you find out about GWRRA?
- What did you think GWRRA was going to be when you first joined?
- What has been your fondest memory of GWRRA?
- When did you decide you wanted to stay part of the GWRRA family? What was the determining factor?
- Where was the first Chapter that you participated with and what was your first involvement with GWRRA?
- Why did you join?
- How do you feel about GWRRA today and its future?

Keep having FUN. Your region team hopes to see you all in March.

Harry





"40 to Phoenix"



**Start 2012 off with our 3rd Annual Coast to Coast International Ride!
Visit the GWRRA International Headquarters in Beautiful Phoenix, Arizona!**

Riders will depart from Wrightsville Beach, North Carolina, on Saturday, March 10, 2012, at 7 AM
Come meet us for a pre-ride brief/dinner on Friday March 9th, 2012, from 6-8 PM at Carolina BBQ; 2703 North College Road, Wilmington, NC.

Overnight stop points are: Knoxville, TN; Little Rock, AR; El Reno, OK; Moriarty, NM; Phoenix, AZ; San Diego, CA; with an excursion to T.J & Ensenada, Mexico. See web site for up-to-date information.

Events are planned at each stop hosted by a local chapter. 50/50, raffles and more. National is providing Ice Cream, Music, 50/50's, raffles, drinks, and more. Vendors are Honda, Can AM and J&M to mention a few.

Tour the GWRRA Home Office and receive your Special "I Visited the Home Office" Pin!

Let's MAKE GWRRA HISTORY "AGAIN!"

Contact:

Brian McCallum

BMcCallum65@yahoo.com

www.40tophoenix.org

Liability Release: Participants agree to hold harmless GWRRA, the co-sponsoring organization(s) and any property owners for any loss or injury to self or property by reason of participating in this event.



Gold Wing Road Riders Association

21423 North 11th Avenue, Phoenix AZ 85027
 CONTACT: Manny Moreno, Marketing Manager
 (800) 843-9460 or (623) 581-2500 (in Phoenix), ext. 274
mmanoreno@gwrra.org www.gwrra.org

Announcement from GWRRRA

GWRRRA ANNOUNCES FREE LOYALTY SAVING COUPONS FOR NEW & RENEWAL MEMBERS IN 2012!

Phoenix, AZ (January 9, 2012)— Truly exciting things are happening with Gold Wing Road Riders Association (GWRRRA) in 2012 and we would like to invite you to participate. We will be giving free loyalty saving coupons to new Members & existing Members who renew in 2012. These loyalty saving coupons, which are valued in the hundreds, will help you save money and are brought to you by some of our valued advertisers from *Wing World*.

◆ Big Bike Parts ◆ Boostaroo ◆ Cozy Winter ◆ East Coast Cycles
 ◆ The Flag People ◆ Gene's Gallery ◆ Motor Trike ◆ Niehaus Cycle Sales
 ◆ Rampage Power Lift Ramps ◆ Sierra Electronics ◆ GWRRRA Official Products

The loyalty saving coupons will arrive in your new Member & renewal Member packets throughout 2012. Existing Life Members and Members who have renewed for multiple years, including 2012, will also receive the loyalty saving coupons by mail.

We want you to know that we are truly honored that you have chosen to be part of our GWRRRA family. Your membership is much appreciated, and we will do our very best to continue to meet and exceed your expectations. Your continued patronage and loyalty is a vital part of our growth. And for that, we are most grateful.

Thanks again, and we look forward to serving you for many years to come.

GWRRRA, with its motto "*Friends for Fun, Safety and Knowledge*," is a not-for-profit organization with over 72,000 Members in 53 countries, and 4,000 volunteer leaders providing rider education and social structure, along with organizing events, conventions, rides and meetings throughout the year. Visit GWRRRA's Web site: www.gwrra.org or call (800) 843-9460 or (623) 581-2500 (in Phoenix) for more information.

Manny Moreno
 Marketing Manager
 800.843.9460 ext. 274
 623.581.2500 ext. 274
mmanoreno@gwrra.org

####



Gold Wing Road Riders Association

21423 North 11th Avenue, Phoenix AZ 85027

CONTACT: Manny Moreno, Marketing Manager

(800) 843-9460 or (623) 581-2500 (in Phoenix), ext. 274

mmoreno@gwrra.org www.gwrra.org

FOR IMMEDIATE RELEASE

ABEL GALLARDO NAMED PRESIDENT OF THE GOLD WING ROAD RIDERS ASSOCIATION

Phoenix, AZ (January 25, 2012) — Abel Gallardo has been named President of the Gold Wing Road Riders Association, Inc. The announcement was made by Paul Hildebrand, Founder and Chairman of the Board. GWRRA is a Phoenix based motorcycle association. Mr. Gallardo was previously the Executive Vice President of Operations and served in that capacity since February 2011. Prior to being appointed Executive Vice President, Mr. Gallardo had been serving as Vice President of Operations since April 2006.

"Abel's effectiveness in serving GWRRA is recognized through this promotion", said Mr. Hildebrand, adding that, "Abel's energy, vision and abilities fit the legacy we have always aspired to in serving our membership. His ideas and goals will set the tone for the future of this great Association".

After joining GWRRA in 1998, Abel Gallardo served GWRRA as Accounting Manager and Operations Manager. While in his previous roles, Mr. Gallardo was responsible for the successful streamlining of GWRRA's accounting systems, which lead to significant savings for GWRRA. Mr. Gallardo is also responsible for the database conversion which enabled GWRRA to transact business via the internet.

Abel Gallardo stated, "The greatness of GWRRA has and continues to be found, in the many relationships that this association has built over the years. From the life-long friendships, all the way to the industry partners made along the way, GWRRA's motto of Friends for Fun, Safety and Knowledge is realized every day as a result of those relationships. It is my primary goal to bring growth, both in membership and industry presence to GWRRA, through programs that strengthen relationships, as well as build new ones, to carry GWRRA into a future of more Friends, more Safety, more Knowledge, and most importantly, MORE FUN".

Mr. Gallardo was born in Los Angeles, CA, until his family relocated to Phoenix, AZ in 1990. He and his wife of 9 years, Sussy, have one son, Seth.

GWRRA, with its motto "**Friends for Fun, Safety and Knowledge**," is a not-for-profit organization with over 72,000 Members in 53 countries and 4,000 volunteer leaders providing rider education and social structure, along with organizing events, conventions, rides and meetings throughout the year. Visit GWRRA's Web site: www.gwrra.org or call (800) 843-9460 or (623) 581-2500 (in Phoenix) for more information.

Paul Hildebrand, COB, Founder
800-843-9460 / paulh@gwrra.org

Abel Gallardo, President
800-843-9460 ext. 224/ abel@gwrra.org

Manny Moreno, Marketing Manager
800-843-9460 ext. 274 / mmoreno@gwrra.org

###

Membership Enhancement Notes

John & Lena Bryant

**Region H Membership Enhancement and
Couple of the Year Coordinators**



CHAPTER COMPETITIONS GUIDELINES

NEWSLETTER GUIDELINES

1. Any GWRRA Chapter may enter.
2. At least one current Chapter representative must be present at the Region H Convention and be a registered delegate.
3. Newsletters mailed to Chapter participants between the previous twelve months are eligible for competition.
4. Entries must consist of no less than two (2) no more than four (4) unique newsletters.
5. Newsletter judging criteria are based on content as outlined in the Membership Enhancement Program Chapter Newsletter Award Guidelines

- Chapter Name or initials
- GWRRA logo
- Region, District, and Chapter Letter designation
- Inclusion of information from National, Region, and District newsletters
- Rider Education safety information
- Stories submitted by members other than officers.



SCRAPBOOK GUIDELINES

1. Any GWRRA Chapter may enter.
2. At least one current Chapter representative must be present at the Region H Convention and be a registered delegate.
3. Subjective judging of the scrapbooks is based on content, relevance of material to goals of GWRRA, artistic content, and organization.
4. Objective judging of the scrapbooks is based on the use of GWRRA logos, Region, District, and Chapter identification.

BANNER GUIDELINES

1. Any GWRRA Chapter may enter.
2. At least one current Chapter representative must be present at the Region H Convention and be a registered delegate.
3. Banners will be judged on the use of the GWRRA initials, or the full name of the association, and helmet logo.
4. Banners will be judged on the use of the Chapter name or initials, District name or initials, and Region initial. Chapter nickname or logo is optional.
5. Points will be awarded for artistic content and ease of identification.

MASCOT GUIDELINES

1. Anyone may enter.
2. All entrants must possess a sense of humor.
3. Mascot must belong to a registered delegate at the Region H Convention.
4. Mascots cannot be alive.
5. Mascots must be of a size and construction that can be safely attached to or ride on the motorcycle.
6. Entry forms must be completed and submitted with the mascot on the day of judging.
7. The general good humor of the judges, originality of the entry form, and mascot will determine winners.





GWRRA BEST DRESSED COMPETITIONS

There will be four categories in the Best Dressed Competition:

Best Dressed (Couple/Chapter), **Parade** Category

Best Dressed (Couple/Chapter), **Riding** Category

Chapter Shirts

Convention Theme (Couple/Chapter) Category

General Rules/Definitions for all Dress Competition:

1. Each entrant must be an Individual Member, Family Member, Individual Associate Member or Family Associate Member of GWRRA
2. Each participant in Couple/Chapter Parade must wear the 10 inch GWRRA back patch and GWRRA membership pin
3. Participants will be expected to perform "1/4 turns" to allow judges to see outfits.
4. Parade/Riding categories have two sub-categories
5. Couple – defined as one male & one female
6. Chapter – consists of at least four participants
7. To compete in Best Dressed Chapter/Chapter Shirt, members must wear their chapter's designation
8. Because these competitions are intended to be fun events, Rider Ed. or Mileage awards will not be judged.

Best Dressed Couple/Chapter Parade category does not include music or routines.

The Contestant's outfits will be suitable for representing their chapter in a parade or other event.

Best Dressed Couple/Chapter Riding category does not include music or routines.

The contestant's outfits will be suitable for motorcycle riding.

Chapter Shirts category does not include music or routines.

The contestants are judged on shirts only. Vests, Jackets, Pants, Caps, Sashes etc. are not a part of this category. Ties may be worn in Dress shirt category.

Convention Theme category does not include music routines.

Contestants are judged on how well their outfit represents the Convention theme.

There are 3 classes in Chapter Shirt Category

1. Dress Shirt (suitable for representing Chapter in a parade or other event)
2. Knit Shirt (with or without a collar) includes tee shirts, polo style & golf type shirts. Suitable for Chapter meetings or other casual events.
3. Casual shirts (long or short sleeve) (not made of knit fabric) suitable for Chapter meetings or other casual events.

2011 Couple of the Year

Wendell and Marie Vince



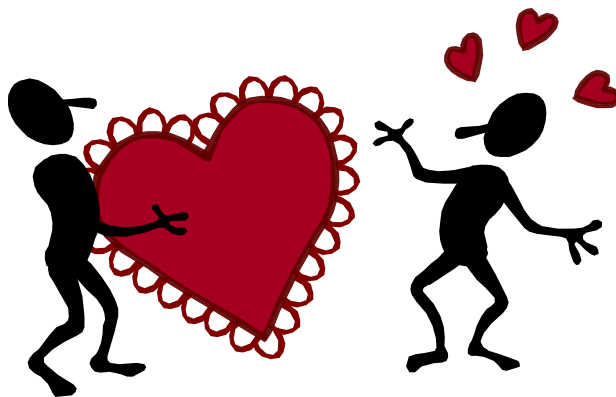
We are off to a busy start, beginning with our continuing as Chapter Directors for Chapter O for another year. We just returned from the LA District Team Business meeting, where we planned the course for the upcoming year. Our next event will be Louisiana Wingless Weekend in February where Chapter competition is exciting and full of surprises.



We are also making plans for the Region H Convention in March, working with the Region H COY Coordinators to get everything ready for our new COY participants. Make your plans to be with us and re-discover the Fabulous 50's.

As always, *Ride Safely.*

*Marie & Wendell Vince,
2011 Region H Couple of the
Year*



Assistant Region Director's Comments

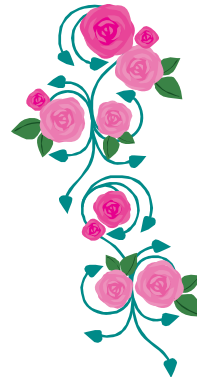
Bill and Dee Ann Gray

Meetings, Meetings and More Meetings

January was a busy month to say the least. We attended business meetings in Arkansas, Texas, Kansas and Oklahoma! Great learning experience! Good job District Directors with organization and planning of your meetings.

Region H is off to a good start for 2012 and we're excited about the upcoming conventions. We heard a lot of buzz about new and exciting activities being planned.

Speaking of conventions, SIGN UP NOW for our Region H Convention in Marshall, TX, March 29, 30 & 31! **Fabulous 50's!** Remember Bo Diddley, Buddy Holly, Bobby Darin, Ritchie Valens AND wait, wait...let me curl my lip...ELVIS! Remember James Dean & Marilyn Monroe? How about Yogi Berra and Willie



Mays?

The registration forms are online at www.region-h.org. Pre-register by March 1 and be eligible for the \$250 Mini-Grand Prize! It will also be a time for celebrating Harry and Joan's tenure as Region H Directors and watch as Dea Ann & I get sworn at (I mean sworn in, hehe) at closing. WHAT ARE YOU WAITING FOR?

See you somewhere!

Bill & Dea Ann Gray

Region H Asst. Director

918-231-9371 cell

www.region-h.org

Want to know about what is going on in GWRRA? Check out the "Insight" Newsletter

The Director of GWRRA in conjunction with the Directors of Rider Education, Leadership Training and Membership Enhancement are publishing a monthly newsletter. It can be found at:

<http://med.gwrro.org/newsletter/newsletter.html>

Chapter of the Year

Ann Nahl

Region Chapter of the Year Coordinator

2012 Things to Know

CHAPTER OF THE YEAR 2012

Attention All Chapters

Remember to submit your monthly calendar to the District Chapter of the Year Coordinator. If you add an event afterwards you can always submit a revised calendar.

Be sure to start compiling seminar rosters, extraordinary events, recruiting activities etc. this month so you will have a complete package by the end of the year. It is much easier to track this information if you record it as it happens.

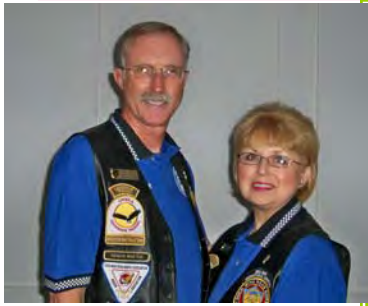
A change for 2012 is in the balancing of the points given for any one area. The points will be distributed as follows: General 65 points, Membership Enhancement 66 points, Rider Education 66 points, and Leadership Training 66 points, for a total of 263 possible points.

The percentages for attending various Conventions have changed. Be sure to refer to the 2012 Chapter Of The Year Program Guide for requirements. The number of participants needed to meet the new criteria is calculated from the monthly gathering roster of Chapter participants who attended at least half of the gatherings. For example, if your Chapter participation averages 40 then 4 participants would satisfy a 10% requirement, 6 would satisfy a 15% requirement, and so on.

Full information and the score sheet can be found on the GWRRA International Web Site under Programs. Click MEP, then click Chapter of the Year, and click on the 2012 Chapter Of The Year Program Guide and Score Sheet.

Ann Nahl
Region H Chapter of the Year Coordinator





BY THE BOOK

By: Steve Cotton

Region H Trainer

The "By the Book" articles are intended to help familiarize GWRRA Volunteer Leaders and Members with the policies, procedures, and information contained in the GWRRA Officer's Handbook (OHB). A copy of the Officer's Handbook can be found at the following Internet website: www.gwrroa.org/oconnect/officerhandbook.html

Please feel free to reprint these articles in Region, District, or Chapter newsletters.

Thanks to John Simonick (former Texas District Director and Texas District Trainer) for the inspiration to write this month's article based on ideas he wrote in February 2004. Revisions have been made to keep it current.



Keep Your Chapter Director "Honest"

"Our sole purpose is to keep it simple, make it FUN, ..."



A Chapter Director's role is to represent the desires of Membership through the collective efforts of the Chapter Team. Who, if anybody, evaluates whether Chapter Directors are acting in the best interest of their Chapter? Could they be acting based upon their personal beliefs? Would those beliefs adequately represent the desires of the general Membership? Who could make that determination? Why YOU, of course!

To be able to determine if the Chapter Director is "on track", you will need to have a basic understanding of the Officer's Handbook (OHB). In this issue, I would like to present the Introduction to all GWRRA Officers provided by our Director. This is found in

page A-1 of the Handbook.

Dear GWRRA Officers:

You have accepted a very important and responsible position in our Association that will challenge you to provide leadership. A position to furnish an environment for our Members to come together to experience mostly FUN and CAMARADERIE; to enjoy riding their GOLD WINGS or VALKYRIES and, most importantly, take advantage of GWRRA's RIDER EDUCATION.

The network you now join as an Officer of GWRRA is wholly responsible for the communication link between the Association and our Members. By acceptance of this Offi-

cer's position, all of us have agreed to support the ideals of GWRRA and to provide our Members with a relaxed, fun atmosphere... free of politics and religion. Politics and religion are a personal choice and should always be left to the individual discretion of the Members. Our sole purpose is to keep it simple, make it FUN, and say YES 99.5% of the time. The word "NO" is not in our vocabulary unless it is absolutely in the best interest of our Members' safety.

This handbook provides you with background information about our remarkable organization. We hope you will refer to it often. If at anytime you are uncertain about anything pertaining to your continued on page 13

BY THE BOOK
By: Steve Cotton
Region H Trainer

Keep Your Chapter Director “Honest”

Continued from page 12

office, please call your appointing Officer and ask for assistance. All of us are here to support you and to help you be the best that you can be.

In conclusion, as Officers, we are here to serve our Members; they are not here to serve us. We are here to ensure their fun and entitlement as Members of the Gold Wing Road Riders Association. Congratulations and best wishes for a successful and meaningful tenure as an Officer of GWRRA.

In the Handbook, the signature of then-Director of GWRRA Melissa Eason appears after these previous paragraphs. There are a few important points I would like to emphasize here. In the first paragraph, the point is that the Officer is challenged to be a leader, make it FUN, and promote inclusiveness. Does your Chapter Director allow, promote, or participate in cliques? I would chal-

lenge that cliques are in opposition to the “coming together” principle.

In the second paragraph, the responsibility is delineated to the Officers to be the communication link between the Association and the Membership. Does the Chapter Director (CD) keep the Chapter informed of news from the Association? This can be accomplished through the newsletter, chapter gathering, website, etc. Additionally, this may be accomplished through the Chapter Team. Nevertheless, the CD is responsible for this communication.

Is there any discomfort or conflict in the Chapter that is political in nature, or dealing with religion? The statement “...free of politics and religion” in the 2nd paragraph delineates the CD’s responsibility on that front.

Does the CD respond with “no” frequently, turning down reasonable re-

quests and nixing reasonable suggestions? See the last two sentences in the second paragraph.

Finally, does the CD act more like a boss than someone who serves? The first sentence in the last paragraph reads, “... as Officers, we are here to serve our Members, they are not here to serve us.”

If any of these concerns are perceived as real within your own Chapter, challenge your CD to re-read Section “A” of the Officer’s Handbook. With a little cooperation, your Chapter may become even more successful.

Learn Something New...
Then Teach Someone!

Steve and Carolyn Cotton

Region H Trainers



“..as Officers, we are here to serve our Members; they are not here to serve us. “



Rider Education "Safety is for Life" Motorist Awareness



**Bill and Jennie McBride
Region H Motorist Awareness Coordinators**

**Our Mission is to Facilitate a
Reduction in Motorcycle Crashes with Other Vehicles**

Documentation of our Motorist Awareness activities is a necessary part of maintaining our 501 (c)4 not for profit compliance.

To do this we have to make sure that our activities are documented at all levels and retained for 7 years.

And this documentation needs to be passed on to an incoming Director from the outgoing Director.

Each Director must insure that their level of control is maintaining their compliance in case the IRS wishes to audit them.

Most of this activity needed to meet this compliance is a part of our normal activities and just needs to be documented, and maintained.

The activities can be varied and fun and are limited only by your imaginations and drive.

Some of the activities that we commonly do are: parades, bike/mall shows and distributing brochures that are related to Motorist Awareness. Monthly newsletter articles and safety talks to organizations are other ways to meet these goals.

When the Chapter rides in a parade find out how many people were present.

This is the entire number of people in the parade and people viewing it. You can check with the organization who initiated the parade for the number.

The same is true for a bike/mall show. You can make up a Motorist Awareness brochure or obtain them from GWRRR home office. These can be handed out and the total given out should be documented.

Your local newspaper might run a public service announcement about Motorist Awareness. Or you can ask a local radio station to play a public service announcement. These pre-recorded announcements are available from your District Motorist Awareness Coordinator.

Your documentation needs to be very specific as to what was done, when it was done, where it was done, etc. If you are dealing with TV, radio or newspapers make sure you specify their names and how many people use this media.

The GWRRR Director of each level (Chapter, District and Region) is responsible for insuring that the 501(c)4 compliance is met by their level of responsibility. They are also responsible to insure that the documentation of these activities are

completed and maintained at their level.

This is IRS related tax material and should be retained by the current Director for 7 years.

The statistical information should be turned in to the District Motorist Awareness Coordinator who will then pass it on to the Region and then onto the International Director. It should also be sent to the appropriate Educator for inclusion in their report.

If you have any questions about these activities please contact your District Motorist Awareness Coordinator.

Ride safe, Ride often and Share the Road,

Bill and Jennie McBride
Region H

Assistant Directors
Motorist Awareness Coordinators

Medic First Aid

Steve & Terri Bockhaus

Region H MFA Coordinators



Wow, 2012 is off to a flying start! I am sitting here preparing to go to the Kansas Mid- Winter Convention. This has made me think (I know that is dangerous for me). How many people have made New Years Resolutions? If you did, what are they and are you keeping them?

I try not to make them, but try to set goals. Maybe you have done the same. But are they realistic goals? I know we all want to ride more this year. My miles were down for 2011. But will we?

We all want to ride safer. But will we take any riders courses? How about an ERC? I missed taking one last year due to health reasons. But how about this year? Will we find an excuse? To me an ERC is fun and challenging. I plan on taking one.

Do we want to make a lifestyle change? I do. I want to be healthier, but I have to make the change. I have looked back at last year and

found that I did not treat everyone I know with proper respect. How about you? Are you treating everyone with the respect they deserve? I can only change my actions, not yours.

Here is a big one! Do you want to save a life this year? Yes, this is a tough one because we do not know what situations we will be in. We do not know if we will be at an accident scene. Possibly a scene where lives are at stake. We do not know if at



a chapter gathering that there might be some one who chokes on food. We do not know if we will be at a convention and witness some one having a heart attack. This person may only need to have EMS called. But what about if they go into cardiac arrest? Will you know what to do before EMS arrives?

It is easy for use to say "oh there will be some one

around who knows CPR", but will that person be you? Without trying to sound like a commercial, I recommend that everyone take a Medic First Aid ® class. There is no reason why not. In the past, many have said that the class is too long. With the new updates that all of the region instructors have taken, the class is much shorter in time. Many have said that it is too hard to learn. All of our instructors are trained in making the class as easy as possible.

Well enough for now. Hope to see all of you soon. We will be offering MFA at the Region convention in Marshall Texas.

Steve & Terri Bockhaus
MFA Instructor/Trainers

Region H MFA Coordinators



Rider Education

“Safety is for Life”

John and Lydia Bourg Region H Educators

Region Convention Part One

“You do too much at your convention. There are too many things on your schedule!” We have been told that and we heard what was said but we do not believe it. Everyone does not want to do the same thing at a convention. We want to do the very best we can to make sure that every Member has something to attend that will interest them and make their motorcycling experience better in the future.

We were all brought to GWRRRA because of our motorcycles. We joined because we RIDE motorcycles. Rider Education is proud to offer the following riding course and events for your pleasure.

Friday we will hold a Parking Lot Practice Facilitator Training. There is a classroom portion and a “range” portion. What is it? The Rider Education Handbook describes it as follows:

“The GWRRRA Parking Lot Practice Facilitator Program is designed to ensure consistency at the District/Chapter level regarding all GWRRRA Parking Lot Practices. The Rider Edu-

cation leadership recognizes and embraces the value of conducting the PLPs as a membership benefit. Anytime we can have our “GW Friends” participate in a structured program for them to “Remind and Refine” their riding skills will “Save Lives”. However, it is a concern that these PLPs are conducted in a consistent manner adhering to GWRRRA guidelines and State Motor Vehicle Training Guidelines in their locality. It needs to be noted that all State Governments require some form of licensing to conduct a rider class with instructors. Because of this, GWRRRA has designed this program to ensure that no coaching is done while conducting a PLP. Great care has been put in to the design of the “GWRRRA Motorcycle Parking Lot Practice Guide” and the “GWRRRA Trike/Sidecar Parking Lot Practice Guide” to ensure that a Facilitator can successfully conduct a PLP without the need to coach. These guides will serve as a means to allow the Rider to “Discover” how they can refine their skills during the event. This is not a play on words; rather it is phi-

losophy we intend on adhering to.”

Do you want to be able to offer this to your Chapter? Contact your District Educator because he must sign the Form N.22 in order for you to take this course. After the classroom portion there will be a Parking Lot Practice offered for Trikes and Sidecars.

Are you someone who needs to take a Sanctioned PLP because you have put a trike kit on your vehicle and cannot take the GWRRRA Trike course? Well then, come to the Region H convention and participate in the Parking Lot Practice on Friday afternoon. All it takes is for you to contact your District Educator to allow him time to make the arrangements with us.

Trike Course

The Trike course will take place over two days this year. Friday morning will see participants in the classroom while the range portion will take place on Saturday morning.

Continued on page 17

Rider Education

“Safety is for Life”

John and Lydia Bourg Region H Educators

Region Convention Part One continued

The class is filling up so go online and sign up now if you want to be sure of a place in class. A few requirements must be met:

- The vehicle must have three wheels and handlebars. The Can Am Spyder is allowed, the Stallion is not.
- You must have a valid driver's license with a motorcycle endorsement
- You must show proof of current insurance for the motorcycle you are riding
- You must wear the following on the range: a DOT approved helmet, eye protection, full-fingered gloves, over-the-ankle foot protection (boots preferred), with the balance of the body fully covered (leather or abrasion-resistant attire preferred; denim accepted.) Jackets or shirts should be a

single piece of apparel and not be modular (i.e., not "riding sleeves").

Road Captain Course

The Road Captain Course will be offered Friday as well. The classroom portion will be offered starting at 1:00pm with the road portion immediately following. Requirements for the road portion of the class are as follows:

- It should be stressed that ALL candidates for Road Captain MUST have a working CB radio on their bike.
- Proper riding gear must be worn at all times during the road portion of the course.

Amazing Team Challenge

On Saturday morning Rodd Polk and Merlyn Hartman will again offer the Amazing Team Challenge. Do not let the name of this event scare you, it really is a lot of fun.

What is it? This event is a fun course which is officially described as “ a timed, competitive event, involving a straight-away, right and left turns, a couple of 360 degree circles,

a cone weave, stopping in a box after the timed run and a *lot of fun*. It is open to all levels of ability— it can be easy for the novice rider and humbling for the more advanced rider. Proper riding gear is required.”

Unofficially we describe it as a hoot. The components are something you do each and every time you go out for a ride so come have fun with it. See who is going to be awarded the Turtle Award and who will get the Rabbit. You might be surprised at who it is. It just might be you.

Start planning what you will do at the convention. Next month we will discuss the many classroom seminars we are offering. If you want a sneak preview check the convention schedule in this newsletter.

Region H Rally
Fabulous Fifties in Marshall, TX - March 29 - 30 - 31, 2012
SCHEDULE OF EVENTS -

Thurs. March 29th	What	Where	Who	Region Contact
8:00 AM - Noon	Outside Vendor Setup	Parking	Region	Harry/Pyburn
8:00 AM - Noon	Inside Vendor Setup	Caddo	Region	Harry/Pyburn
8:00 AM - 9:00 AM	Region Staff Meeting - <i>DD's if available</i>	Blue Bonnet	Region	Harry
Noon - 5:00 PM	Information Booth w/ signups	Lobby	Region	Jennie
Noon - 5:00 PM	Leadership Training Table	Lobby	LTP	Cotton
Noon - 5:00 PM	Rider Ed Table	Lobby	R Ed	Bourg
Noon - 5:00 PM	Recruiting Table	Lobby	MEC	Bryant
Noon - 5:00 PM	Newsletter/Mascot/Scrapbook/Sign Up	Lobby	MEC	L. Bryant
Noon - 1:00 PM	How can I participate in GWRRR	Sabine	C. DePriest	Cotton
1:30 PM - 2:30 PM	Member Benefits Overview	Sabine	Listers	Cotton
3:00 PM - 4:00 PM	Delegating - Key to Leadership	Sabine	M. Rowlett	Cotton
4:30 PM - 5:30 PM	Pine Car Derby Races	Theater	LTD	Harry
6:00 PM - 8:30 PM	Opening Ceremonies	Theater	Region	All
6:30 PM	Mini-Grand Prize Drawing	Theater	Region	Harry
6:30 PM	Hot dogs & root beer floats Sponsored by Kroger			
7:00 PM - 11:00 PM	Bus Trip to Shreveport (Signup on Web) *Need Drivers License & DOB for COMP!			
Fri. March 30th	What	Where	Who	Region Contact
8:00 AM - 5:00 PM	Information Booth w/sign ups	Lobby	Region	Jennie
8:00 AM - 9:00 AM	COY Interviews (Closed Meeting)	Golden Corral	MEC	Bryant/
9:00 AM - 12:00 PM	Trike Course Classroom	Stagecoach	Roby	Bourg
8:30 AM - 2:00 PM	Fun Run Sign Up	Lobby	TX-I	Jennie
8:30 AM - 4:00 PM	Leadership Training Table	Lobby	LTP	Cotton
8:30 AM - 12:30 PM	Registration	Lobby	TX	Ed/Ann Nahl
12:30 PM - 5:00 PM	Registration	Lobby	KS	Ed/Ann Nahl
8:30 AM - 12:30 PM	Security		AR	Gray
9:00 AM - 11:00 AM	Parking Lot Practice Facilitator Class	All American		Bourg
8:30 AM - 5:00 PM	Vendors	Caddo	Region	Harry/Pyburn
8:30 AM - 5:00 PM	Rider Ed Table	Lobby	R Ed	Bourg
8:30 AM - 5:00 PM	Recruiting Table	Lobby	MEC	Bryant
8:30 AM - 5:00 PM	Ticket Sales	Lobby	COY	Vinces
8:30 AM - 5:00 PM	Bike Show Sign Up	Lobby	KS/AR	Jennie
8:30 AM - 5:00 PM	Newsletter/Mascot/Scrapbook/Sign Up	Lobby	MEC	Bryant
9:00 AM - ???	Motor Trike Tour (Advance Signup Required)	Troup, TX	TX-Y2	B. McBride
9:00 AM - ???	Medallion Hunt - until found	Lobby	OK	Dea Ann
9:00 AM - 10:00 AM	Staffing and Appointment	Sabine	J. Irons	Cotton
9:00 AM - 10:00 AM	Mature Rider	Seven Flags	R Ed	Bourg
10:00 AM - 11:00 AM	2012 Region COY Selection	Theater	MEC	Bryant/Vince
11:30 AM - 12:30 PM	Crafts Class	Marshall	Region	Lydia/Jennie
12:00 PM - 1:00 PM	How to have Fun at a Rally	Sabine	M. Pyburn	Cotton
1:00 PM - 2:00 PM	Membership Enhancement Seminar	All American	MEC	Bryant
1:00 PM - 2:30 PM	On Bike Road Captains Course	Stagecoach	Van Sickler	Bourg
1:00 PM - 4:00 PM	Boat cruise on Caddo Lake	Lobby	Region	Joan
2:00 PM - 3:00 PM	Remembering Names	Sabine	Dannars	Cotton
2:30 PM - 3:30 PM	Bingo	Marshall	Region	Jennie/Maurine
2:30 PM - 5:00 PM	On Bike Road Captains Course (Road Portion)		Van Sickler	Bourg
3:00 PM - 5:00 PM	Bike Wash by Local Boys/Girls Club	Parking	AR	Gray
3:00 PM - 4:00 PM	Night Riding	Stagecoach	R Ed	Bourg
4:00 PM - 5:00 PM	Pine car Derby Races	Theater	Region	Harry
4:00 PM - 5:00 PM	Co-Rider Seminar Two	All American	L. Heene	Bourg

Region H Rally
Fabulous Fifties in Marshall, TX - March 29 – 30 - 31, 2012
SCHEDULE OF EVENTS -

Fri. Mar. 26th	What	Where	Who	Region Contact
5:00 PM – 8:30 PM	Poker Walk	Downtown	Region	Dea Ann
6:30 PM – 8:00 PM	Sock Hop/Street Dance	Downtown	Region	
8:00 PM – 8:15 PM	Light Show Staging	Downtown	LA	McBride
8:30 PM	Light Show	Downtown	LA	McBride
9:00 PM	Light Parade	Downtown	Region	McBride
Sat. March 27th	What	Where	Who	Region Contact
7:00AM – 8:00 AM	Masters Breakfast	Golden Corral	R Ed	Bourg
8:30AM - 5:00 PM	Information Booth w/sign ups	Lobby	TX	Jennie
8:30AM – 10:00 AM	Drop off Newsletters, Mascots, Scrapbooks, and Banners for Judging	Stagecoach	MEC	Bryant
8:30 AM – 10:30 AM	Helicopter Landing Zone Training Sponsored by Mounting Innovations	All American		Harry
8:30 AM – 12:30 AM	Trike Course Range	Marshall H.S.	Roby	Bourg
8:30 AM – Noon	CPR/First Aid	Seven Flags	MFA	Bockhaus
8:30 AM – Noon	Recruiting Table	Lobby	MEC	Bryant
8:30 AM – 1:00 PM	Fun Run Sign Up	Lobby	TX	Jennie
8:30 AM – 1:00 PM	Registration	Lobby		Ed/Ann Nahl
8:30 AM – 1:00 PM	Security		OK	Gray
8:30 AM – 4:00 PM	Leadership Training Table	Lobby	LTP	Cotton
8:30 AM – 4:00 PM	Rider Ed Table	Lobby	R Ed	Bourg
8:30 AM – 9:30 PM	Problem Solving	Sabine	L. Heene	Cotton
8:30 AM – 4:00 PM	Ticket Sales	Lobby	COY	Vince
8:30 AM – 5:00 PM	Vendors	Caddo	Region	Harry/Pyburn
9:00 AM ???	Medallion Hunt – until found	Lobby	OK	Dea Ann
9:30 AM – 11:00AM	Bike Show Classification	Parking	KS/AR	Cotton
10:00AM – 11:00AM	Leadership Training Program – Open Discussion	Sabine	E. Nahl	Cotton
10:00AM – Noon	Judge Newsletters, Mascots, Scrapbooks, and Banners	Stagecoach	MEC	Bryant
11:00AM – 2:00 PM	Ladies Bus Trip to Marshall Shopping	North Entry	Region	Joan
10:00AM – 1:00 PM	Downtown Poker Walk	Downtown	Region	Dea Ann
10:00 AM – 2:00 PM	Bike Wash by Local Boys/Girls Club	Parking	Region	B. Gray
10:30 AM – 11:30AM	Region H Couple of the Year Reunion	All American	MEC	J&L Bryant
10:30 AM – Noon	Off Bike Games	Parking	OK/TX	Ann
11:00AM – 1:00 PM	Amazing Team Challenge	Marshall High	Polk	Bourg
11:00 AM - 12:00 PM	Bike Show Staging	Parking	KS/AR	Cotton
11:00AM – 1:00PM	Fun Run Check In	Lobby	TX-I	Jennie
11:30AM – 12:30 PM	Building High Performance Teams	Sabine	L. Heene	Cotton
11:30 AM - 12:30 PM	COY Seminar	All American	MEC	Bryant
Noon – 3:00 PM	Art Party	N. Entrance	Region	Lydia/Jennie
12:30 PM- 1:30 PM	Bingo	Marshall	Region	Jennie/Maurine
1:00 PM – 2:00 PM	Pine Car Derby Races	Theater	Region	Harry
1:00 PM – 2:00 PM	Chat with Rider Educators	Seven Flags	R Ed	Bourg
1:00 PM – 2:00 PM	How to Pack Your Bike	Sabine	C. Sadler	Cotton
1:00 PM - 2:00 PM	First Aid Kit – What Is In Yours?	Stagecoach	Dr. Bel	Bourg
1:00 PM – 3:00 PM	Bike Show Judging	Parking	KS/AR	Cotton
1:00 PM – 3:00 PM	Public Access	Vendor Area		Harry
2:30 PM – 3:30 PM	Dress Competition, Couple, Chapter	Theater	TX	Maurine/Vince
2:00 PM – 3:30 PM	Trailer Seminar	Marshall	R Ed	Bourg
3:00 PM – 4:00 PM	Co-Rider Seminar	Seven Flags	Sanders	Bourg
2:30 PM – 3:30 PM	Motivating Volunteers	Sabine	L. Heene	Cotton
4:30 PM – 8:00 PM	Closing Ceremonies	Theater	Region	All

*Rider Ed and Training Drawings **Grand Prize Drawings ***50/30/20 Drawings



FABULOUS FIFTIES

**Your Region H Convention – March 29, 30, 31, 2012
Convention Center, Marshall, Texas -**

Mini-Grand Prize \$250

Daily 50/50 Drawings

Grand Prize TWO \$500 Drawings

Daily Drawing for a Free 2013 Convention Registration

(Drawn From Pre-Registration)



Full Registration Includes:	
Convention Pins for first 500 Registered	
Thursday Night Hot Dogs & Root Beer Floats	
Light Show & Parade	Trike Course
COY Selection	Bike Show
On/Off Bike Games	Competitions
Casino Trip	Tours
Seminars	Participation Prizes
Friday Night Sock Hop	Poker Walk
Vendors.....Vendors.....Vendors	
And all the Region H FUN you can stand.	

Pre-register by March 1, 2012 and be eligible for the \$250 Mini-Grand Prize.

Make checks payable to: GWRRA Region H
 Mail registration form and payment to:
 Harry Dollarhide, 19719 S.E. 59th St, Newalla, OK 74857-6410
 Pay Pal Payment Method Available on Region H Website <http://gwrro-h.org>

	Quantity	Pre-Registered	Total Pre-Reg	On-Site
Full Registration				
GWRRA Member		\$25.00		\$27.00
Life Member		\$12.50		\$13.50
Non Member		\$30.00		\$30.00
Medic First Aid First Time 8 hrs Fri.		\$25.00		\$25.00
Medic First Aid Recertify 4 hrs Sat.		\$25.00		\$25.00
Trike Course *		\$50.00*		\$50.00†
Art Party** (page 4) Saturday Afternoon		\$15.00		\$15.00
TOTALS				

*Classroom on Friday, range on Saturday. \$25.00 refunded upon completion of course

On-line registration available through Pay Pal @ gwrro-h.org
 Children under 12 FREE! Must be registered to compete for prizes

Rider _____

Age _____ Birthday _____ GWRRA# _____ Expires _____

Co-Rider _____

Age _____ Birthday _____ GWRRA# _____ Expires _____

Address _____ City & State _____

Zip _____ Phone _____ Region _____ District _____ Chapter _____

Direct Mileage to Rally _____

I/We agree to hold harmless GWRRA, any co-sponsoring organizations, and any property owners for any loss or injury to self or property by reason of participating in this Rally. I/We also agree to assume responsibility for any property which I/We knowingly damage.

Rider _____ Co-Rider _____ Date _____

HOST HOTEL

HOLIDAY INN EXPRESS
500 I20 East (I20 & Hwy 59)
Marshall, Texas
(903) 934-9700

GWRRR RATE: \$85.00 INCLUDES FULL BREAKFAST

CAMPING

[Country Pines RV Park](#)

www.countrypinesrv.com - 5935 US Highway 59, Marshall - (903) 935-4278

[Marshall RV Park](#)

www.marshalltxrvpark.com - 4812 Elysian Fields Road, Marshall - (903) 923-0044

[Circle M RV Park](#)

maps.google.com - 871 Harris Road, Marshall - (903) 935-3510

[C & S RV Park](#)

www.csrvpark.com - 382 Nesbitt Cutoff, Marshall - (903) 930-0757

[Twin Trails RV Park](#)

twintrailssrvpark.com - 543 County Road 2200, Marshall - (903) 934-8744

[Holiday Springs RV & Mobile Home Park](#)

maps.google.com - 8285 US Hwy 59 S, Marshall - (903) 938-6954

[Welcome RV Park](#)

maps.google.com - 661 Adams Rd, Marshall - (903) 935-3913

Proud Sponsor

Open Night Ceremonies

Kroger Groceries

Will provide hot dogs and root beer floats for our Thursday opening.

ART PARTY

Saturday Afternoon: We will provide all the supplies with step by step instructions for the novice or artistically challenged to be amazed at what they can paint in 2 to 3 hours. The finished acrylic painting on canvas is yours to take home. Enjoy an afternoon with friends while getting step by step instructions on creating your personal masterpiece to take home. Instructions are designed for the novice artist and artistically challenged. We will paint a scene from Caddo Lake so you have a remembrance of your 2012 Region H Convention.

Includes:

- *Lesson by a professional artist / teacher
- *Limited class size (adults only)
- *All supplies furnished: paint, brushes, canvas, easel, and apron
- *Participants are invited to provide their own snacks.
- *Your master piece is yours to take home



This event is non-refundable; however someone else may take your place.

Arkansas District Rally
May 24 – 26, 2012
 Durand Center, Harrison, AR



Registration Form

GWRRR Member	\$25.00	\$30.00
Life Member	\$15.00	\$20.00
Non Member	\$30.00	\$35.00
13 -17 Years Old	\$ 5.00	\$10.00
50/25/25 Tickets 6 for \$5 **	\$ 5.00	
50/25/25 Tickets 30 for \$20 **	\$20.00	
Saturday Night Drawing must be present		
Grand Prize Tickets - \$1.00 ea (must be present to win)	\$1.00	
Totals		
Full Registration Required for Level IV Breakfast		Children 12 and under - FREE Must be Pre-Registered to win prizes
Level IV Breakfast	How Many	Amount Due Pre-Register
Level IV Rider (current) #		Free
Level IV Co-Rider (current) #		Free
Level IV Rider (not current) #		\$5.00
Level IV Co-Rider (not current) #		\$5.00
Totals		

Rider: _____ GWRRR # _____ Age _____
 Co-Rider _____ GWRRR# _____ Age _____
 Address _____ City _____ State _____ Zip _____
 Telephone _____ Email _____
 Region _____ District _____ Chapter _____ Direct miles to Rally _____

Deadline for Pre Registration: April 30, 2012 No Refunds after May 1st

I/we agree to hold harmless the GWRRR, any co-sponsoring organizations, any property owners, for any loss or injury to self or property by reason of participating in this rally.

Rider Signature _____ Date _____
 Co-Rider Signature _____ Date _____

Make Checks payable to:
 Connie Brandon
 13682 W. Hwy 72
 Hiwasse, AR 72739

Hotel Information

CO- Host Hotels

1929 Hotel Seville

302 North Main ST
Harrison, AR 72601
870-741-2321
\$76.50 plus tax

Hotel Seville is a historic hotel
Directly across the street from the
Durand Center. It only has 50 rooms,
so it is first come first serve.



Quality Inn

1210 US 62/65 N.
Harrison, AR 72601
870-741-7676
\$71.90 plus tax

The Quality Inn has plenty of newly
updated rooms and is less than
2 miles from the center.



BY CHOICE HOTELS

Other Hotels

Days Inn Harrison
Hampton Inn Harrison
Super 8 Harrison AR
Family Budget Inn Harrison

Camping

Parkway Travel Park 870-743-2198
Shady Oaks Campground 870-743-2343
www.CampTheOaks.com

MISSOURI DISTRICT "Wing the Ozarks"

"It's Good To Be Back"

**May 31 – June 2, 2012
Branson, MO**

Hosted by AmazINN & Southern Oaks Inn



Full Rally Registration Includes:

- Free Spaghetti Dinner Thursday evening
- Observation Runs
- Seminars
- Light Show/Parade
- Bike Show
- Trade Show
- On Bike Games
- Chapter Competitions
- Master's Gathering
- Free Lunch Friday & Saturday
- Free Ice Cream Social
- 2 Meal Vouchers per person

If Pre-Registered by May 15, 2012 you also receive:

- DUB Card (Entry into \$250 Drawing)
- Rally Pin to first 250 Pre Registered

Rally Lodging (on site)



AmazINN

3311 Shepherd of the Hills
Expressway
Branson, MO 65616
(417) 334-2300



Southern Oaks Inn

3295 Shepherd of the Hills
Expressway
Branson, MO 65616
(417) 335-8108

**Officer Certification Program
(OCP)**

Training Available

Wednesday, May 30, 2012

10 am–6 pm

&

Thursday, May 31, 2012

9 am–1 pm

Contact John & Nancy Hoffmann

by May 15 if interested.

jennhofmann61@gmail.com

1-636-541-1164

Be sure to mention **GWRRR** at either hotel

\$52.95 + Tax per night

Includes Continental Breakfast

For additional Rally information contact Bruce and Sherry Watkins

(573) 450-8050 modirector@lve.com

mogwrra.org

GWRRR of Missouri reserves the right to change the schedule or any entry on this rally flyer for any reason at any time.

Missouri District Rally May 31 – June 2, 2012
Registration Form

Make checks payable to: **GWRRRA of Missouri**

MAIL TO: Glenn & Carol White, 605 Della, Versailles, MO 65084

REGISTRATION: (Please Print)

Rider: _____ GWRRRA Number: _____

Co-Rider: _____ GWRRRA Number: _____

Expiration Date: _____ / _____ (Month/Year) State/Chapter: _____ (ex. MO-A)

REP Master Tour Rider Number: (If applicable) Rider: _____ Co-Rider: _____

Address: _____

City/State/Zip Code: _____

Telephone: _____

Email: _____

Pre-Register before May 15, 2012: When pre-registered you will receive an entry card (DUB Card) into a drawing for \$250! DUB card will be in your Registration packet you will receive at the Rally. Rally pin included with the first 250 pre-registrations.

FULL Registration on or before May 15, 2012:

GWRRRA Members: \$30.00 x _____ people = \$ _____

Non-GWRRRA Members: \$35.00 x _____ people = \$ _____

FREE Spaghetti Dinner Thursday evening x _____ people = \$ 0.00

TOTAL AMOUNT ENCLOSED \$ _____

AFTER MAY 15, 2012 and on site registration:

GWRRRA Members \$35.00 x _____ people = \$ _____

Non-GWRRRA Members: \$40.00 x _____ people = \$ _____

FREE Spaghetti Dinner Thursday evening x _____ people = \$ 0.00

TOTAL AMOUNT ENCLOSED \$ _____

Day Pass Available on site \$20 (includes 1 meal voucher)

Children 15 years and under admitted free of charge.

Sorry...No Refunds after May 15, 2011

I/we agree to conform to and comply with the ideas governing the Rally, and I/we further agree to hold harmless GWRRRA, Co-sponsoring organization or any property owner for any loss or injury which I/we become involved by reason or participation in the rally. I/we also agree to assume responsibility for any property that I/we knowingly damage. I have read and agree with all stipulations of this entry form.

Rider Signature: _____

Co Rider Signature: _____

GWRRR OKLAHOMA DISTRICT CONVENTION

"Gone with the Wind"

SOUTHEAST EXPO, MCALESTER, OKLAHOMA

October 4th - 6th, 2012

Red Carpet Dance - Thursday, October 4th at 7 P.M.



MUST PRE-REGISTER BY SEPTEMBER 15TH, 2012
MEAL TICKETS FOR PRE- REGISTERED ONLY (All ages must pay for meal ticket)

REGISTRATION FORM

DESCRIPTION	QTY	PRICE (each)
GWRRR Member		\$25.00
GWRRR Member (On Site)		\$30.00
GWRRR Life Member - (20+ Years)		\$17.50
GWRRR Life Member - (20+ Years) (On Site)		\$20.00
Non GWRRR Member		\$30.00
Non GWRRR Member (On Site)		\$35.00
Meal Tickets (must purchase one per person regardless of age)		\$5.00

NO MEAL TICKETS WILL BE SOLD ON SITE

CPR - Friday	\$10.00
First Aid - Friday	\$10.00
CPR - Saturday	\$10.00
First Aid - Saturday	\$10.00
Trike Course - Friday	\$35.00
Trike Trailering - Saturday	\$35.00

Kids 12 and under can attend rally FREE!

You must purchase a meal ticket for each person regardless of age.

TOTAL

LEVEL IV LUNCH FOR LEVEL IV ONLY FREE
MUST BE CURRENT BY SEPT. 15TH, 2012
RIDER LEVEL IV # _____ CO-RIDER LEVEL IV # _____

Rider Name: _____ AGE: _____
 Co-Rider: _____ AGE: _____
 Additional Family Member: _____ AGE: _____
 Additional Family Member: _____ AGE: _____
 Address: _____
 City: _____ State: _____
 Phone: _____
 DISTRICT _____ CHAPTER _____ REGION _____ Miles: _____
 E-Mail Address: _____

I / We agree to hold harmless the GWRRR, co-sponsoring organization, and any property owners for any loss or injury to self or property to which I / We may become involved by reason of participation in this convention. I / We also agree to assume responsibility for any property which I / We knowingly damage.

Rider: _____ Date: _____
 Co- Rider: _____ Date: _____

MAKE CHECKS PAYABLE TO: OKLAHOMA DISTRICT
MAIL TO: LARRY COWAN
716 W DEWEY
SHAWNEE, OK 74801





MEET YOUR REGION H TEAM



Region Director
Patches and Pins
Harry and Joan Dollarhide
director@gwrra-h.org
(405) 391-7661

Assistant Region Director
Bill and Dea Ann Gray
bgray455@cox.net
918-231-9371

Assistant Region Director
Region MAD Coordinator
Bill and Jennie McBride
adirector@gwrra-h.org
mad@gwrra-h.org
(870) 257-4777



Assistant Region Director
Vendor Coordinator
Jere and Maurine Pyburn
a2director@gwrra-h.org
318 387-1741

Region Trainer
Steve & Carolyn Cotton
trainer@gwrra-h.org
(918) 245-7111



Assistant Region Trainer
Jack Wagner
jwagner10@cox.net
(405) 359-7892

Region Educator
Webmaster/Newsletter
John and Lydia Bourg
educator@gwrra-h.org
webmaster@gwrra-h.org
newsletter@gwrra-h.org
(281) 242-5125



Assistant Region Educator
Sam and Anita Belinoski
ared@gwrra-h.org
(281) 469-5755

Region MFA Coordinator
Steve and Terri Bockhaus
mfa@gwrra-h.org
(316) 772-6603



Region MED Coordinator
John and Lena Bryant
med@gwrra-h.org
(817) 741-5216



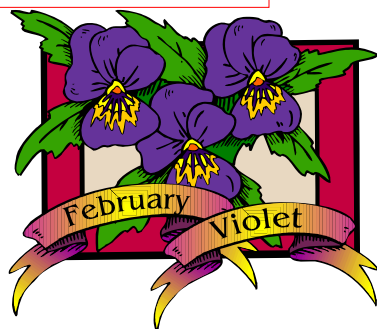
Region Couple of the Year
2011–2012
Wendell and Marie Vince
coy@gwrra-h.org

Region Treasurer
Chapter of the Year Coordinator
Ed and Ann Nahl
treasurer@gwrra-h.org
(405) 321-6467

GWRRA Region H The Hospitality Region

Harry and Joan Dollarhide
Region Director
19719 SE 59th St
Newalla, OK 74857

Phone: (H) 405-391-7661
(C) 405-694-5218
Email: hdirector@gwrra-h.org



Newsletter deadline is the 21st of each month. Please send your articles to: newsletter@gwrra-h.org
This newsletter is meant to be a resource for the Districts and their Chapter participants. Comments and suggestions are always welcome.

District contacts:

Arkansas District Director:
Chris and Pam DePriest 501 882-9172
director@argwrra.org

Kansas District Director:
Garry and Phyllis VanBuskirk 316 321 -0896
triketalk@hotmail.com

Louisiana District Director:
Merlin and Beverly Mayon 985-384-2673
merlinmayon@att.net

Oklahoma District Director:
Larry Cowan 405 535 1154
iscnok@gmail.com

Texas District Director:
Fred & Mandy Mew 817-707-3568
TexasDD@gwrra-tx.org

Region H Calendar of coming Events



www.gwrra.org

1-800-843-9460

WING DING 34

July 4–7, 2012

Fort Wayne, IN

Region H Convention
March 29 –31, 2012
Marshall, Texas

Louisiana District Convention
April 12-14, 2012
Lafayette, LA

Texas District Convention
May 17–19, 2012
New Braunfels, TX

Arkansas District Convention
May 24–26, 2012
Harrison, AR

Kansas District Convention
August 24–26, 2012
Manhattan, KS

Oklahoma District Convention
October 4–6, 2012
McAlester, OK

